



COMP3850: Computing Industry Project

SESSION 2 2020 - 90 PACE ACTIVITY HOURS



- Combine theory with practice to provide an IT solution to your partner organisation, while enhancing your C.V. and professional experience
- As a member of a diverse consultancy team, design a prototype or proof of concept IT solution
- No matter what stage you are at in life or career, this unit enhances professional pursuits

HOW DOES THE UNIT WORK?

PACE units combine theory-based curriculum with practical experience (PACE activity). COMP3850 requires you to draw together and apply the knowledge and skills you have learnt in previous units, while identifying and gaining new knowledge and skills needed to solve a real-world problem. You must undertake all the curriculum (e.g. workshops/lessons and assessment) and the PACE activity in order to be eligible to complete the unit.

To find out more about COMP3850 and enrolment requirements visit the [Handbook](#).

HOW DO I FIND MY PACE ACTIVITY?

All COMP3850 PACE activities will be made available to you through the unit.

You can express an interest for your preferred COMP3850 activity through iParticipate (a system you will be given access to once enrolled).

The Unit Convenor will finalise the allocation of students to teams and projects.

PACE-SPECIFIC TIMELINES

COMP3850 Timelines (see Unit Guide for academic dates)

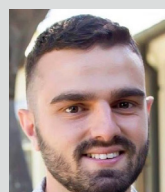
Key dates	Activity information
ASAP	Plan ahead and prepare to enrol in COMP3850 to maximise outcomes
2 weeks before session starts	Available activities will be ready to view for expressions of interest
1 week before session starts	Activity expression of interest closes
Week 1 of session	You will be advised of your allocated project and team, you will complete student induction, and meet your partner organisation
Ongoing	<ul style="list-style-type: none"> • Throughout the session - spend time reflecting on your PACE activity experiences and the unit curriculum in preparation for completing assessments. • Regular engagement with your partner organisation will depend on what you and the host supervisor have negotiated. Meeting every two weeks is a good guideline. • Students should manage and plan carefully so they can meet their other commitments (e.g. part-time work or other university studies).

COMP3850 ALUMNI VIDEOS

[Katrina and Benjamin help bushwalkers find their way through the development of an app](#)

[Blair develops IT consultancy skills at EY](#)

COMP3850 STUDENT TESTIMONIAL



“Students will gain first-hand experience working in an agile Systems Development Life Cycle (SDLC) involving producing project documentation and developing a system that has constrained deadlines. I guarantee that this is one of the best experiences you will have and you must be able to work hard and communicate with the client as well as behave ethically.”

RICHARD MAROON, BABSC, MAJOR IN BUSINESS INFORMATION SYSTEMS

IS RECOGNITION OF PRIOR LEARNING (RPL) POSSIBLE?

As per the University's RPL Policy, if you can evidence prior achievement of the [Academic Senate's criteria for PACE units](#) then RPL for PACE might be possible. Acknowledgement of past or current employment alone is not sufficient for this purpose; however, evidence could include demonstration of achieving core PACE criteria through experiential learning that has occurred as part of that employment, or successful completion of a PACE-like unit elsewhere.

Refer to the PACE-specific information in the University's [RPL Policy](#) for more detail. Information on how to apply can be found [here](#).

ANYTHING ELSE I NEED TO KNOW?

STUDENT UNDERTAKING

Once enrolled, you will be asked to agree to your Roles and Responsibilities and provide emergency contact details via a Student Undertaking form in iParticipate. Doing this and receiving approval for your PACE activity are necessary before you can start your PACE activity.

BACKGROUND CHECKS (WWCC, POLICE CHECK, HEALTH CHECK ETC.)

Some PACE activities require background checks before you commence such as Working With Children Check, National Police Check etc. The checks necessary (if any) will depend on your activity and the requirements of your partner organisation.

REASONABLE ADJUSTMENTS

PACE activities are available to ALL undergraduate Macquarie students regardless of their personal circumstances. Students are encouraged to disclose and discuss any personal circumstances which may impact on their ability to complete a PACE Activity before selection or allocation of PACE Activities is finalised. For more information refer to the [PACE Activity Management Procedure](#) and the [Student Disability Support Policy](#).

Refer to our [reasonable adjustments video](#) for more information.

PACE AND ETHICAL PRACTICE

Ethical practice features heavily in PACE and involves negotiating the ethical complexities of the context in which you are working, engaging in activities in an ethical manner, and ethical partnerships. Students should not undertake a PACE activity that would cause a conflict of interest (e.g. with a current employer). Please advise the Unit Convenor as soon as any ethical concerns (including conflict of interest) arise.

INTELLECTUAL PROPERTY RIGHTS

It is possible that a PACE activity might result in the creation of intellectual property (IP). IP is a term that describes the application of the mind to develop something new or original. IP may exist in various forms, such as a new invention, brand, design, software program or artistic creation.

Discussion about this should occur with your partner organisation at the start of the session. You might even be asked to sign an IP agreement. Note: IP generated by students with substantial use of partner organisation resources and input (e.g. the initial problem for which a solution is being developed) will normally be required to be assigned to the partner organisation.

If you are uncertain about your rights, speak with your Unit Convenor or Faculty PACE team. The University does not provide students with legal advice in respect of IP creation, ownership or rights of use and recommends students obtain independent legal advice before signing an IP agreement. The University has developed a draft agreement that could be used by students and partners to assign IP and this is available through your Unit Convenor.

For further advice you can contact the Office of Commercialisation and Innovation by emailing commercialisation@mq.edu.au

PACEWISE

Re-visit [PACEWISE](#) to find out more about:

- Great hints on how to present yourself professionally
- The Judyth Sachs Prize
- PACE Equity and Travel grants
- Your Roles and Responsibilities
- Your Work Health and Safety

COMP3850 PARTNER TESTIMONIAL

"The best aspects of the PACE experience is meeting great young people - gaining innovative ideas from them."

Rebecca Deep, Productivity Bootcamp



HOW CAN I FIND OUT MORE INFORMATION?

For questions specific to the academic requirements of COMP3850 contact the Unit Convenor.

For all other enquiries about COMP3850, contact the Faculty of Science and Engineering PACE team:

T: +61 (2) 9850 6842

E: pace.science@mq.edu.au



MACQUARIE
University